

DATA SHEET SERIES LG1-T - ARMORED TUBULAR LIQUID LEVEL GAUGE

SERIES LG1-T ARMORED TUBULAR LIQUID LEVEL GAUGE |

The LG1-T series gauges are armored tubular liquid level gauges with NPT or flanged connections at each end. These gauges provide a visual means for checking the contents of a bulk tank. They can also be used to set and monitor the injection rate of a chemical metering pump. The gauges operate in low to medium pressure applications up to 500 psig.

DESIGN & APPLICATION:

a. Design Features: The armored design of the gauge offers maximum protection for the sight tube from mechanical impact. Three sides of the gauge are protected with a metal frame, while the face of the gauge is protected with an expanded metal or impact resistant polycarbonate shield. The polycarbonate shield may be supplied with factory markings or custom calibrations. Various wetted materials and seals are available to ensure compatibility with the specific process. For mounting purposes, a mounting lug is welded to the back of the gauge.

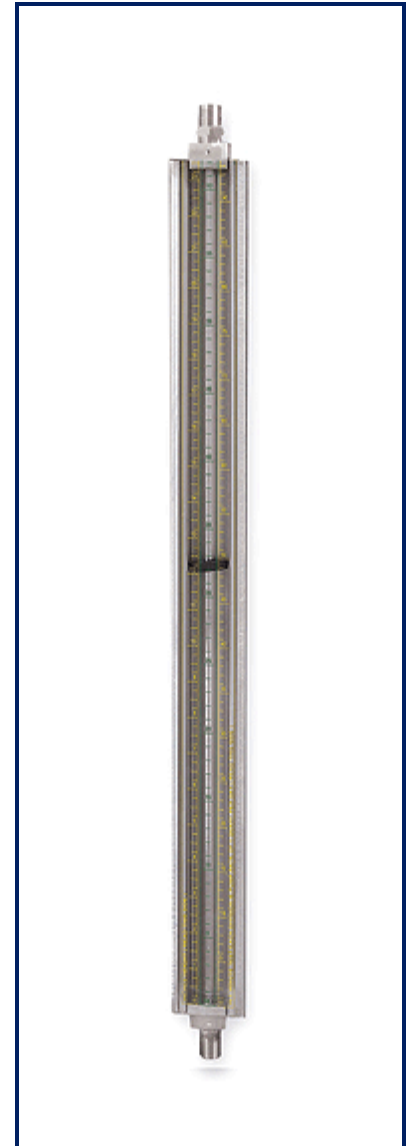
The LG1-T-M50 series has 1/2" MNPT threaded process end connections and is available with an optional 3/8" NPT vent plug (specify). 1/2" to 2" flanged process connections are also available. The standard sight tube is 5/8" O.D. glass. Other flange sizes/ratings and sight tube options are also available upon request. The LG1-T-M10 gauge is fitted with 1" MNPT process connections (flanged process connections are also available). The standard sight tube is 1" O.D. glass, which makes it ideal for viscous liquids. Other flange sizes/ratings and sight tube options are also available upon request.

b. Special Gauge Application-Chemical Injection Systems: LG1-T Series gauges can be used to calibrate chemical injection systems. The injection rate of a chemical metering pump is checked by closing a valve between the gauge and the chemical storage tank and observing the change in fluid height in one minute. Using the rate scale on the front of the shield, count the number of marks the fluid level passed during the one minute test period to give you the actual chemical pump rate. If the rate is not the one desired, make an adjustment to the chemical pump feed rate, and conduct as many one minute tests as is needed to set the pump to the rate desired.

SHIELD OPTIONS:

- L Clear Polycarbonate shield with no markings. Provides 100% visibility as well as environmental protection.
- H Height shield marked in 1/4" increments, labeled every inch.
- MH Metric Height marked in 1 CM increments, labeled every 5 CM.
- RH Rate/Height shield used for checking the pump rate of a chemical pump is calibrated in QTS/24 Hrs., ML/Min and has a height scale labeled in 1/4" increments.
- MRH Metric Rate/Height shield is calibrated in ML/Min and Liters/24 hrs. The height scale is labeled in 1 CM divisions.
- M Expanded metal shield made from flattened 304SST or plated steel

CUSTOM SHIELDS: PAPAIIAS, Inc. can provide custom scales to meet your needs, please consult the factory.



PAPAIIAS, Inc. Series LG1-T-M50
Armored Tubular Level Gauge w. 1/2" MNPT ends



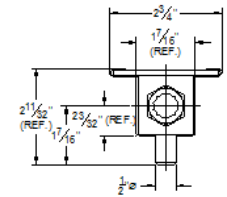
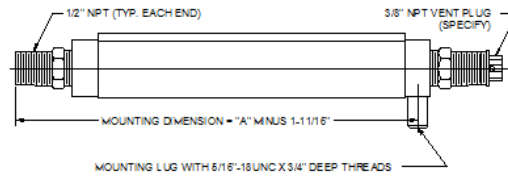
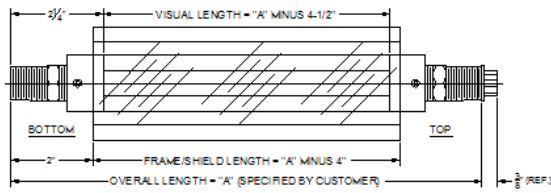
PAPAIIAS, Inc. Series LG1-T-FL
Armored Tubular Level Gauge w. Optional
Flanged Ends

J.G PAPAIIAS CO., INC

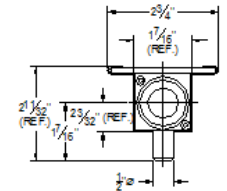
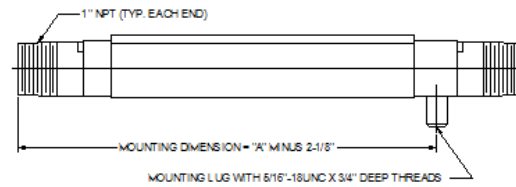
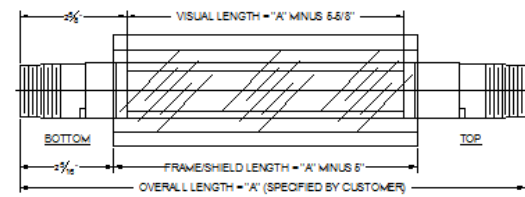
245 Pegasus Ave., Northvale, NJ 07647
Tel: 201-767-4027 www.papailias.com

DATA SHEET SERIES LG1-T - ARMORED TUBULAR LIQUID LEVEL GAUGE

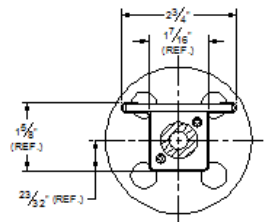
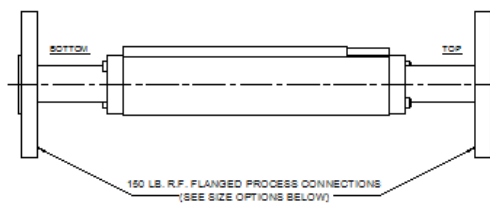
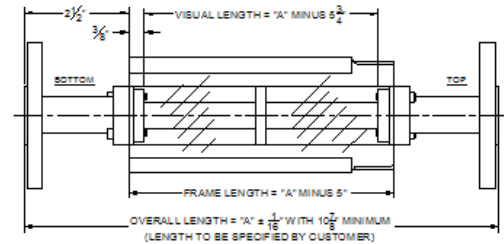
SERIES LG1-T-M50



SERIES LG1-T-M10



SERIES LG1-T-FL



ORDERING INFORMATION:

Gauge Style/Size:

LG1-T-M50: 1/2" MNPT
 LG1-T-M50: 1" MNPT
 LG1-T-FL50: 1/2" 150 RF FLG
 LG1-T-FL50: 1/2" 150 RF FLG
 LG1-T-FL50: 1" 150 RF FLG
 LG1-T-FL50: 1-1/2" 150 RF FLG
 LG1-T-FL50: 2" 150 RF FLG

Overall Length of Gauge (Inches):

Specify

Material of Construction:

C= Zinc Plated Carbon Steel
 A= Stainless Steel
 W= All Wetted Parts 316 Stainless Steel w/Zinc Plated Carbon Stl Frame
 PC=PVC Wetted w/Carbon Stl Frame
 PS=PVC Wetted w/Stainless Stl Frame
 Other (Please Specify)

For flanged models, select options C, A, PC, or PS only

Seal Material:

V = Fluorocarbon
 A =Aflas B=Buna-N
 T = (LG1-T-M50) PTFE (LG1-T-M10) FEP Encap. Silicone
 E=Ethylene Propylene
 Others Available upon Request

Shield Option:

L=Clear Polycarbonate
 H=Height Scale
 RH=Rate Height Scale
 MH=Metric Height Scale
 MRH=Metric Rate Height Scale
 M=Expanded Metal Guard

Sight Tube Option:

GS = 5/8" Ø Glass (M50)
 1" Ø Glass (M10)
 RL = 5/8" Ø. Redline Glass (M50)
 1" Ø Redline Glass (M10)
 Other Available upon Request

Max Working Pressure (PSIG):

Specify

Max Working Temperature (°F):

Specify

Steam:

S = Steam Service
 NS - Non-Steam Service

Example Order Number: LG1-T-M50-52-CVH-GS-ATM-200-NS

J.G PAPAIIAS CO., INC

245 Pegasus Ave., Northvale, NJ 07647
 Tel: 201-767-4027 www.papailias.com

